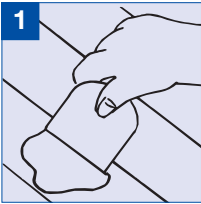


BEFORE PROCEEDING PLEASE NOTE:

FOR SPOT PATCHING



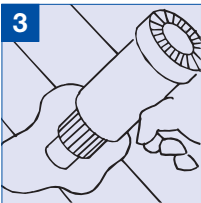
1. APPLY:

If staining, use OSMO WOODFILLER Natural/Clear. Otherwise match the colour to the wood. Using a plastic or high-quality stainless steel putty knife, apply OSMO WOODFILLER to the floor directly out of the tub prior to the last sanding. (NOTE: If filler turns black, the putty knife is not high-content stainless steel; however, the black will sand off.)



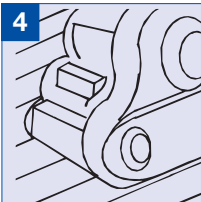
2. FILL:

If hole is greater than 6mm, fill by layering OSMO WOODFILLER in 6mm increments.



3. DRY:

Let OSMO WOODFILLER dry thoroughly. Use a heat gun or similar to speed drying time if desirable. (OSMO WOODFILLER is properly dry if it sands to the consistency of talcum powder.)

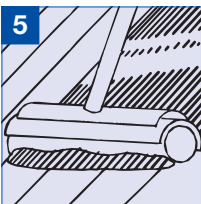


4. SAND:

Sand and remove all dust and debris.

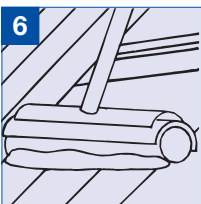
5. STAIN:

Apply stain to the floor (if staining). Do not rub the stain in with an aggressive action. Doing so will remove OSMO WOODFILLER.



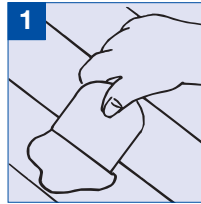
6. FINISH COAT:

Apply Osmo or any final finish coat.



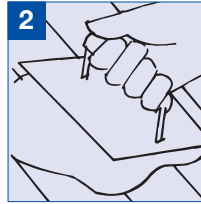
• OSMO WOODFILLER will dry lighter and return to its original colour once the final finish is applied

FOR TROWEL FILLING



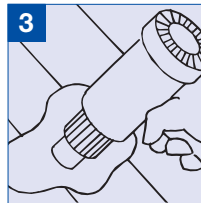
1. MIX:

If staining, use OSMO WOODFILLER Natural/Clear. Otherwise match the colour to the wood. Mix OSMO WOODFILLER in the tub with warm water (a mixer attached to a heavy duty drill is ideal). Slowly pour the water in as you mix – usually about 15% water by weight. Mix until OSMO WOODFILLER has the consistency of toothpaste.



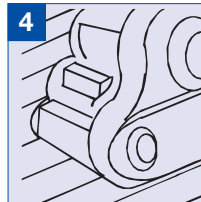
2. APPLY:

Apply OSMO WOODFILLER just before the final sand using a plastic trowel or rubber coat across the grain over the entire floor. Make sure the filler is forced into deep voids. Do not apply OSMO WOODFILLER too heavily – a small amount goes a long way. Remove all excess OSMO WOODFILLER. (Return excess to the OSMO WOODFILLER container – no waste.)



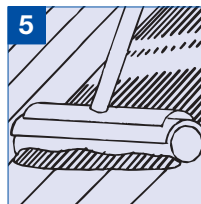
3. DRY:

Let OSMO WOODFILLER dry thoroughly. Use a heat gun or similar to speed drying time if desirable. OSMO WOODFILLER is properly dry if it sands to the consistency of talcum powder.)



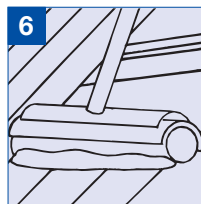
4. SAND:

Final sand and remove all dust and debris. (If grain filling do not use a grit coarser than 120.)



5. STAIN:

Apply stain to the floor (if staining). Do not rub the stain in with an aggressive action; doing so will remove OSMO WOODFILLER.



6. FINISH COAT:

Apply Osmo or any final finish coat.

• OSMO WOODFILLER can be mixed with any tint or stain to achieve a custom colour

ADVANTAGES OF USING OSMO WOODFILLER INCLUDE:

- Fast drying, approximately 30 minutes
- Available in a wide range of colours
- Non-flammable
- Multi-purpose/ edgefiller, woodputty, crackfiller, sanding sealer all in one
- Non-toxic
- Non-acrylic/ latex/ solvent
- Tools easy to clean in water
- Stainable, before or after application
- Heat proof and freeze proof
- Won't shrink, sink, crack or fall out
- Indefinite life storage – no waste
- Usable to last drop



Excellent for commercial and domestic applications.

